

# College Camp 2019

**Milan**  
12-17-19-24 July

**Brescia**  
July-September

**Piacenza**  
17 July

**Roma**  
23 July-24 September

**APPLICATION REQUIREMENTS  
AND REGULATION**

RESIDENTIAL COLLEGES OF UNIVERSITÀ CATTOLICA  
A.Y. 2019-2020

**CALL FOR ADMISSION  
OR READMISSION**

[collegiunicattolica.it](http://collegiunicattolica.it)



UNIVERSITÀ  
CATTOLICA  
del Sacro Cuore

ISTITUTO TONIOLO  
ENTE FONDATORE  
DELL'UNIVERSITÀ CATTOLICA DEL SACRO CUORE

 **EDUCatt**  
Ente per il Diritto allo Studio Universitario  
dell'Università Cattolica

## Contacts of the FINANCIAL SUPPORT OFFICES in the different campuses

For any kind of information request

CAMPUS	ADDRESS	PHONE NUMBER	EMAIL ADDRESS
MILANO	Largo A. Gemelli, 1 20123 MILANO	+39.02.7234.2416	<a href="mailto:info.dsu@educatt.it">info.dsu@educatt.it</a>
BRESCIA	Via Tosio, 1 25100 BRESCIA	+39.02.72172604	<a href="mailto:info.bs.dsu@educatt.it">info.bs.dsu@educatt.it</a>
PIACENZA	Via dell'Anselma, 7 29100 PIACENZA	+39.0523.621111	<a href="mailto:info.pc.dsu@educatt.it">info.pc.dsu@educatt.it</a>
ROMA	Largo Francesco Vito, 1 00168 ROMA	+39.06.3050120	<a href="mailto:info.rm.dsu@educatt.it">info.rm.dsu@educatt.it</a>

[www.educatt.it](http://www.educatt.it) | [www.collegiunicattolica.it](http://www.collegiunicattolica.it)

web area for the online application: [myeducatt.unicatt.it](http://myeducatt.unicatt.it)

# APPLICATION REQUIREMENTS AND REGULATION OF THE CALL FOR ADMISSION OR READMISSION INTO THE RESIDENTIAL COLLEGES OF UNIVERSITÀ CATTOLICA FOR A.Y. 2019/2020

## DISCLAIMER

This document aims at summing up the main necessary requirements to be assigned or confirmed accommodation in the Residential Colleges of Università Cattolica.

Nevertheless, it does not substitute the Italian document “*Bando di Concorso a.a 2019/2020 per l'ammissione e requisiti per la riammissione*”, which remains the only legally valid reference as to the definition of the criteria of admissibility in the rankings for the access to EDUCatt accommodation solutions.

## GENERAL REGULATION FOR ALL THE CAMPUSES (Milan, Brescia, Piacenza, Rome)

Fondazione EDUCatt – Ente per il diritto allo studio dell'Università Cattolica, which has been given the task by Università Cattolica to manage its housing solutions - actively contributing, in this way, to the University educational project - is glad to propose a student-welcoming formula in the accommodation facilities that takes into account both the students' and their families' needs, aiming at mutual collaboration for the individual's integral education.

### 1. PLACES AVAILABILITY

---

The call for admission and readmission in the Residential Colleges of Università Cattolica del Sacro Cuore is officially open, in compliance with the following acts:

- *D. Lgs. n 68*, 29 March 2012;
- *Legge della Regione Lombardia n 33/2004*;
- *Decreto del Presidente del Consiglio dei Ministri*, 9 April 2001.
- *Deliberazione della Giunta della Regione Lombardia n. XI/1724*, 10 June 2019
- the Agreement between Università Cattolica and EDUCatt for the management of the Student Support Services.

This call includes both the very first admission and the readmission in the university Residential Colleges of already hosted students. The students already living in the Residential Colleges own the right to the readmission, only if they meet the requirements in this document.

Students are usually readmitted in the same Residential College where they were hosted the previous year. If the student has any proved technical, organizational or managerial needs, EDUCatt can propose a different location, in accordance with the availability among other residences.

The minimum amount of places for the new admissions is established in the percentage of 15% of the places available respectively for campus and sex.

## 2. GENERAL CONDITIONS TO APPLY FOR THE CALL

The call for admission and readmission in the Residential Colleges is exclusively dedicated to the so-called “away-from-home” students<sup>1</sup> enrolled or willing to enroll in Università Cattolica in the academic year 2019/2020. Those students who, after the due verifications, do not result as enrolled in the academic year 2019/2020 must refer to the particular conditions specified in paragraph 10.3 of the call.

The candidates applying for the very first admission in the Residential Colleges must be younger than 27 on 1<sup>st</sup> January 2019.

Those applicants who are younger than 18 when actually accessing the residential colleges will have to provide EDUCatt with the consent form signed by the parents in advance<sup>2</sup>.

All the Residential Colleges have an internal regulation which must be acknowledged, signed and respected by all students when moving into the college.

NB: the official communications by EDUCatt are published on the website [www.educatt.it](http://www.educatt.it) or sent directly via email. Therefore, students are expected to promptly inform EDUCatt of any change of their email addresses and to constantly check their email inboxes (including spam folders).

### 2.1 ✓ WHO CAN APPLY

**Students enrolled or intending to enroll in Università Cattolica for the very first time in the a.y. 2019/2020:**

1. in a regular year of a bachelor degree, a single-cycle degree (provided they do not have a degree yet) and a master degree (after a bachelor degree, provided they do not have an equal degree yet);
2. in the first year “fuori corso”<sup>3</sup>;
3. in the second year “fuori corso”, only if the student has a disability equal to or higher than 66%;
4. in a specialization course for a period of time corresponding to the course duration (excluded those related to the medical area, as specified by the following act: D.Lgs. n 368, 4<sup>th</sup> August 1999)
5. in a PhD program (the so-called “Dottorati di Ricerca”, activated through the following act: Decreto Ministeriale, 3<sup>rd</sup> July 1998, n 210 art 4) for a period of time corresponding to the course duration.

In case there are free places left in EDUCatt residential colleges and not assigned through the current call (either in the beginning of the academic year or during the year), it will be possible to re-allocate these ones through the assignment of a place in the students’ lodgings. The priority will be given to the students previously hosted, during a.y. 2018/2019, in need of the a place to stay until they conclude their career, even if they are not enrolling in a.y. 2019/2020. Such requests will have to be presented by email to EDUCatt offices in the campus the student attends.

<sup>1</sup> To check if you actually are an “away-from-home” student, please verify not to be living in the municipalities corresponding to the categories “local” or “commuting” students, in relation to the campuses of *Milan, Brescia, Piacenza and Rome* ([www.educatt.it/agevolazioni](http://www.educatt.it/agevolazioni)).

<sup>2</sup> The consent form can be requested, also digitally, at EDUCatt office in the campus the student attends.

<sup>3</sup> This expression is used to identify students who have not completed their studies within set time period. **This year is calculated starting from the very first year of enrollment in compliance with the regulation of the specific attended Faculty.** Students enrolling in the first year “fuori corso” of a single-cycle or master degree course in a.y. 2019/2020, who had previously been hosted in a residential college during their first year “fuori corso” of their bachelor degree course, cannot be included in this category, except for the students who have a disability, as specified in par. 2.1. point 3.

## 2.2 WHO CANNOT APPLY

- a. the students who already have a degree belonging to a level equal to or higher than the degree course they are enrolling in and applying for the accommodation in the a.y. 2019/2020;
- b. the students who have already been living in another residential college during the same academic year;
- c. the students enrolling in Università Cattolica after having interrupted their studies either in Università Cattolica or in another university before a.y. 2019/2020;
- d. the students enrolled after asking for “fuori corso intermedio” or for “ripetente intermedio”<sup>4</sup>;
- e. the students who transfer from another campus, faculty or degree course, repeating the enrollment in the year they have already attended<sup>5</sup>
- f. the students leaving the Residential College for more than 6 months due to their participation in a study program abroad<sup>6</sup>;
- g. extra EU students living outside Italy benefiting from specific financial support as indicated in the following web pages: <https://international.unicatt.it/ucscinternational-lauree-di-primo-livello-tasse-e-borse-di-studio>  
<https://international.unicatt.it/ucscinternational-lauree-magistrali-tasse-e-borse-di-studio>
- h. the students enrolled part-time;
- i. the students attending courses related to international projects activated in Università Cattolica, but NOT enrolled in this university.

## 2.3 Particular conditions

The students who belong for the a.y. 2019/2020 to one of the aforementioned categories in the section “who can apply”, but could not apply in the academic years preceding 2019/2020 because they found themselves in one of the situations reported in paragraph 2.2, must refer to EDUCatt document for the call in the Italian language (paragraph 2.3). In case you need clarifications, please contact EDUCatt offices in your campus.

Students should be reminded that they cannot have a continuous job when they live in a Residential College, except for:

- part-time activities under the following Italian acts: artt. 11 and 24 of D.Lgs. 29<sup>th</sup> March 2012 n 68 (200-hour collaboration), or those comparable in terms of hours, such as the so-called "Servizio Civile";
- activities carried out under the contract “StudentWork@EDUCatt” (<http://www.educatt.it/swe>).

Students cannot indicate the Residential College as their permanent residence, apart from foreign students and only for the length of their stay in the structure.

## 2.4 Students with a disability and/or particular health or psychological necessities

In order to be able to find the most suitable solution to welcome students with a disability in EDUCatt residential structures, they have to get in touch with EDUCatt Financial Support Office

<sup>4</sup> This case relates to students who have asked for “fuori corso” not at the end of their university career or in the middle of it.

<sup>5</sup> E.g.: the student who attended the first two years of any faculty (both bachelor degree and single-cycle degree) and who intends to enrol in a first year of another faculty can ask for the admission in the residential structures from the third year of enrolment, except for the merit-based requirements listed in par.3 of the current regulation.

<sup>6</sup> If the period to be spent abroad lasts less than 6 months, the student can still live in the residential structure, paying the whole yearly fee. In this case, it is suggested to check with other students living in a residential structure and facing the same necessities, if they can use the room alternately, in order to split the entire fee into two. If this situation is possible, the respective amounts will be calculated dividing the accommodation fee and the food fee into eleven equal parts (and ½ of the contribution for internal activities and for the bed linen).

as soon as possible, and however 10 working days before the application deadline, as specifically defined for each campus (see the section “Specific details for each campus”).

In case the admission is possible, the student with a disability equal to or higher than 66% takes precedence on the other admissible students during the selection for the place assignment.

Students with particular health or psychological necessities also have to inform EDUCatt as soon as possible, and however 10 working days before the application deadline, as specifically defined for each campus, in order to enable EDUCatt to verify that the conditions for the life in a community are met.

Furthermore, all the students with a disability or particular health or psychological necessities must fill in the dedicated section of the online application for admission/readmission. Any false declaration in such section will imply the penalties specified in chapter 12 of this document.

Once the situation has been verified, EDUCatt could propose the possibility of a temporary short-term stay, at the end of which, EDUCatt will possibly evaluate if the conditions for admission are met.

Possible health or psychological issues arisen after the admission or readmission will have to be investigated by EDUCatt, in order to consider if the student’s stay in the structure can be confirmed.

It is to be underlined that EDUCatt does not provide support services such as accompanying, assistance, night supervision and so on, within the Residential Colleges or other structures having an agreement with EDUCatt. The possible access to the structure by external support (parents or specialized staff indicated by the family) will have to be agreed with EDUCatt and the involved students have to face the related expenses themselves.

---

### 3. MERIT-BASED REQUIREMENTS

---

The merit-based requirements must be distinguished into

- requirements for students enrolled for the very first time in a first year and
- requirements for students enrolled for the very first time in a year after the first one.

---

#### 3.1 Students enrolled for the very first time in a first year

---

The students enrolling for the very first time in a first year of a bachelor degree, a master degree, a single-cycle degree, a PhD program, a specialization program (excluded the medical area) must be correctly admitted and enrolled in the courses according to the different procedures established by their Faculty.

---

#### 3.2 Students enrolled for the very first time in a year after the first one

---

The students enrolling in a year after the first one of bachelor degree, master degree and single-cycle degree courses:

- must have acquired and recorded the minimum amount of academic credits (related to the different subjects of the academic years before 2019/2020) by **10 August 2019**, as specified in the chart below;
- **can benefit from bonus credits**, if they are needed to reach the number of academic credits required, as specified later:

## CHART OF REFERENCE FOR THE ACADEMIC CREDITS

FACULTY	DEGREE COURSE	ACADEMIC CREDITS					
		2°	3°	4°	5°	6°	1° fc
All	Bachelor degree	35	80	==	==	==	135(*)
All	Master degree	35	==	==	==	==	80
All	Single-cycle degree	35	80	135	190	==	245
EXCEPT FOR:							
"Psicologia" and "Medicina e Chirurgia"	Bachelor degree	35	88	==	==	==	148(*)
"Psicologia" and "Medicina e Chirurgia"	Master degree	35	==	==	==	==	88
"Medicina e Chirurgia"	Single-cycle degree in "Odontoiatria"	35	103	165	211	273	333
"Medicina e Chirurgia"	Single-cycle degree in "Medicina"	30	69	127	180	236	296
"Medicina e Chirurgia"	Single-cycle degree in English language ("Medicine and Surgery")	35	78	149	192	258	320
Medicina e Chirurgia	Single-cycle degree in "Farmacia"	32	==	==	==	==	==

(\*) This number of credits is required also for students enrolling in a first year of a master degree.

EDUCatt may make modifications on the chart above, following possible changes taking place after the EDUCatt document for the call is published.

**NB** Not all the credits in a student's curriculum can be taken into account as to satisfy the merit-based requirement (for example, the credits acquired after a non-compulsory internship, the exams defined "integrazioni curriculari" and "soprannumerari" even if they will be later included in the curriculum, and the credits recorded in the student's career after having changed degree course, without continuity<sup>7</sup>). You can check the accepted academic courses in the EDUCatt document for the call in the Italian language. If you have any doubts, please contact EDUCatt offices in your campus.

In accordance with the university, in order to calculate the academic credits valid for the assignment of a scholarship, EDUCatt will consider the results of the following exams, even if recorded after 10th August 2019, as long as these are recorded by 31st October 2019:

- the final test of a compulsory professional training (internships are excluded);
- the exams taken abroad, due to the participation in an international mobility program, by 10th August 2019 (in this case the students MUST communicate this condition to EDUCatt; otherwise, these exams will not be calculated).

The students with a disability level equal to or higher than 66% can have a reduced number of credits according to the typology of their disability (up to 40% of the total credits in the chart above). EDUCatt will establish appropriate merit-based criteria for the single cases in cooperation with experts.

In order to meet the situation facing the students enrolling in the second year of the Faculty of "SCIENZE LINGUISTICHE E LETTERATURE STRANIERE" (Foreign Languages and Literatures) and in the interdepartmental degree course "SCIENZE LINGUISTICHE PER LE RELAZIONI INTERNAZIONALI" (Foreign Languages for International Relations) of the Faculties "SCIENZE LINGUISTICHE" and "SCIENZE POLITICHE E SOCIALI" (Political and Social Sciences), EDUCatt will acknowledge, by convention, some credits for the language exams (e.g. "LINGUA E LETTERATURA" and "LINGUA E LINGUISTICA" for bachelor degree courses) calculating them, as follows:

- 3 academic credits for the oral exam;
- 4 academic credits for the written exam.

If the total credits related to these exams (12) have already been recorded, no increase will be acknowledged for the separated parts.

<sup>7</sup> Example of a course without continuity: a.y.2018/2019 enrolment in 1<sup>st</sup> year of Economics, a.y.2019/2020 enrolment in the 1<sup>st</sup> year of Italian Literature and Philosophy.- Example of a course with continuity: a.y. 2018/2019 enrolment in 1<sup>st</sup> year of Economics, a.y.2019/2020 enrolment in the 2<sup>nd</sup> year of Italian Literature and Philosophy.

### *How to use Bonus Credits*

In order to reach the amount of credits required to be admitted in the ranking by 10<sup>th</sup> August 2019, all the students enrolled in a year after the first can benefit from bonus credits, according to the ways described below. This chance is given only if the student has never benefited from the use of bonus credits before (**not even in other universities**).

#### *Bachelor degree*

1<sup>st</sup> year: no bonus credits

2<sup>nd</sup> year: 5 bonus credits

3<sup>rd</sup> year: 12 bonus credits, if never used before

1<sup>st</sup> year “fuori corso”: 15 bonus credits, if never used before

#### *Master degree (two-year course)*

1<sup>st</sup> year: no bonus credits

2<sup>nd</sup> year: 15 bonus credits, if never used before

1<sup>st</sup> year “fuori corso”: 15 bonus credits, if never used before

#### *Single-cycle degree*

1<sup>st</sup> year: no bonus credits

2<sup>nd</sup> year: 5 bonus credits

3<sup>rd</sup> year: 12 bonus credits, if never used before

4<sup>th</sup> year: 15 bonus credits, if never used before

5<sup>th</sup> year: 15 bonus credits, if never used before

6<sup>th</sup> year (only for the Faculty of “Medicina e Chirurgia”): 15 bonus credits, if never used before

1<sup>st</sup> year “fuori corso”: 15 bonus credits, if never used before

When students use their bonus credits related to a specific course year, they lose the possibility to further accumulate bonus credits, but can only use the ones left during the following years.<sup>8</sup>

It is important to highlight that the bonus credits used for a specific year of enrolment cannot be implied also for the acquirement of the minimum credits requested for the following academic years.<sup>9</sup>

**The students who are admitted or readmitted in the Residential Colleges using their bonus credits will have their fee increased by € 20 for each missing credit.**

### **3.3 Specialization programs and PhDs**

The students enrolled in these courses are expected to meet the requirements to be admitted in the following year.

## **4. EVALUATION OF THE STUDENT’S ECONOMIC AND PATRIMONIAL CONDITIONS (FOR THE ASSIGNMENT OF THE INCOME RANGES)**

The income-based requirements are related to the family unit, as interpreted by the following Italian act: art. 3 D.P.C.M. n 159, 5<sup>th</sup> December 2013. For the students whose family unit generates an income and/or holds capitals in Italy, there are two parameters of reference: the so-called “ISEE” (concerning the economic situation in 2017) and the “ISPE” (concerning the patrimonial situation in 2018)<sup>10</sup>.

<sup>8</sup> For example, if they use 2 credits out of 5 in their second year of a bachelor degree course, they can only have 3 for the following years (both during their bachelor and their master degree).

<sup>9</sup> E.g.: the student who acquires and records 33 credits during the first year of a bachelor degree and benefits from 2 bonus credits to reach the required 35 credits for the access to the scholarship for the second year, will have to acquire and record at least 77 credits in order to meet the merit-based requirement of the third year (80 credits) and can use the 3 bonus credits left.

<sup>10</sup> Except for the students with incomes/properties abroad, as indicated in par. 4.3 of the regulation.



Only by the end of SEPTEMBER 2019, EDUCatt can accept possible adjustments of the income ranges in accordance with the ISEE certification, if the latter document is received after the deadline for this call. If the request is accepted, the student will have to pay € 100 for extra administrative costs.

**Warning!** The students who declare gross income included between 0 and 5,954 € who result admissible for the benefit may be requested some more documents concerning the economic means of support used by the family to face the essential necessities (pay for the rent, for the use of water, electricity, etc.).

---

#### 4.1 Family unit

---

The family unit of the student residing with their parents is composed of the member of the fiscally registered at the moment of the application submission: this must be compliant with the declaration on the family status, named “stato di famiglia”, pursuant the following Italian law: art. 3 of D.P.C.M. n. 159 on 5 December 2013.

Specifically, the family unit is composed of:

1. the applicant (the student);
2. the applicant’s parents – if married together and not legally separated or divorced, or if not married but living together- and their fiscally dependent children even if not present in the declaration of family status;
3. the parent benefiting from family allowances for the student in case of legal separation or divorce;
4. whoever is present in the declaration of family status on the date of the application submission, even if there is no degree of kinship between them;
5. possible foster children of the student’s parents on the date of the application submission.

In case the students do not fiscally live with their parents and is neither “independent” (ref. paragraph 4.2.2 of this regulation), even if married and already having children, will still be considered as part of their parents’ family unit.

In case the parents do not live together, reference must be made to the particular conditions expressed in the following Italian law: art 8 of D.P.C.M. n 159 on 5<sup>th</sup> December 2013.

---

#### 4.2 Economically independent students

---

To be classified as “independent students” according to EDUCatt document for the call in the Italian language (paragraph 4.2), there are two conditions to be met:

- a) the students must have been living on their own, in a property different from the family’s, for two years or more – according to the official residence documentation;
- b) they must have been working, not for a member of the family, for two years or more with a **fiscally declared** income of € 6,500 per year at least.

In order to be recognized as such, the students must provide the following extra documents:

- the economic certification named “certificazione Unica (CU)” related to years 2017 and 2018 for income earned in Italy, or a similar document related to the same years for income earned outside of Italy;
- the tax forms related to years 2017 and 2018;
- detailed residence certificate related to years 2017 and 2018;
- rent or rent-free agreement related to years 2017 and 2018 or, if owner of the property, copy of the deed.

Even if only one of the conditions a and b specified above does not take place – duly certified for all the years of reference – the students cannot be considered independent and, therefore,

their own economic and patrimonial situation and also the one of the original family unit will be taken into account.

If there are any doubts on this matter, the EDUCatt offices in your campus are available.

---

### 4.3 Students with incomes and/or properties abroad

---

The students whose family unit generates an income or holds properties abroad must provide hand in the following documentation to EDUCatt, translated into Italian by the competent authorities. The aforementioned documentation must certify:

- the number of the family members
- the total income of all the family members referred to the calendar year 2018
- the economic value of the real estate owned by the family by 31<sup>st</sup> December 2018, specifying the number of square metres
- the economic value of the movable property (average deposit in 2018).

Students coming from particularly poor countries who find difficulties in providing these documents should contact EDUCatt offices in their campus.

**NB.:** Students coming from non-EU countries are kindly invited to get in touch with UCSC International Office (phone: +39 02 7234.5257-5258-5259, email [international.admissions@unicatt.it](mailto:international.admissions@unicatt.it)), to check if there are any financial aids, as described in the following webpage: <http://www.ucscinternational.it/academics/undergraduate-programs/bachelor-degrees-in-italian#tasse-e-borse-di-studio>.

The student's economic conditions are calculated pursuant the following Italia law: D.P.C.M. 5 December 2013, N. 159.

#### 4.3.1 Regulation related to foreign or Italian students with income and/or properties abroad

For this category of students, the regulation is contained in the following Italian law: art. 8, comma 5 of D.P.C.M. 159/2013. The economic condition of foreign or Italian students residing abroad is calculated through the "Indicatore della Situazione Economica Equivalente all'estero" which is the sum of the incomes earned abroad and of 20% of the estate owned abroad, according to the modalities explained in the following Italian law: art. 7, comma 7 of Decreto legislativo, 29 March 2012, n. 68.

For extra-UE students there are further Italian regulations to consider: D.lgs. 25 July 1998, n.286 and s.m.i. (artt. 4, comma 3 and 39) and D.P.R. 31 August 1999 n. 394 (art. 46, comma 5), based on the average exchange rate in 2018<sup>11</sup>.

Also in this case, the economic conditions taken into account are those of the student's family unit and have to be certified through specific documentation about income and properties, which must be translated into Italian by the competent local authorities.

In countries where there are serious difficulties in having the documents issued by the local Italian Embassy, the documentation will have to be issued by the diplomatic foreign authorities in Italy and legalized by the dedicated offices of Prefettura, pursuant the following Italian law: 33 of D.P.R. 28 December 2000, n. 445.

Students coming from particularly poor countries (indicated in a specific law by the Italian Ministry for Education, University and Research in agreement with the Foreign Ministry) will have their economic conditions evaluated on the basis of a certification by the Italian representation in the country of origin, stating that the student does not notoriously belong to an economically and socially high-ranking family. Such certification can be issued by the foreign

---

<sup>11</sup> The economic and properties conditions is evaluated on the basis of the average exchange rate in 2018 also in the case of students belonging to the European Union but not the Euro area.

university if this is linked with Italian universities through agreements or by Italian institutions authorized to guarantee the economic hedges, in compliance with the current regulations concerning the enrolment of foreign students in Italian universities.

**N.B.:** Students coming from non-EU countries are kindly invited to get in touch with UCSC International Office (phone: +39 02 7234.5257-5258-5259, email [international.admissions@unicatt.it](mailto:international.admissions@unicatt.it)), to check if there is available financial support, as described in the following web-pages

- <https://international.unicatt.it/ucscinternational-lauree-di-primo-livello-tasse-e-borse-di-studio>
- <https://international.unicatt.it/ucscinternational-lauree-magistrali-tasse-e-borse-di-studio>

#### 4.3.2. Documentation requested to ALL the students with incomes and/or properties abroad (outside Italy)

The students whose family unit generates an income or holds properties abroad must provide the following documentation to EDUCatt, translated into Italian by the competent authorities. This documentation must certify:

- the number of the family unit's members;
- the total income of all the family unit's members referred to calendar year 2018;
- the economic value of the real estate owned by the family unit by 31<sup>st</sup> December 2018;, together with the number of square meters;
- the economic value of the movable heritage (average deposit of 2018;).

It will be responsibility of EDUCatt to calculate the corresponding income range.

For all the students (Italian and foreign) with incomes and/or properties both in Italy and abroad, EDUCatt will ensure that the "attestazione ISEE per prestazioni agevolate per il diritto allo studio universitario" includes income and properties abroad in the calculation, proceeding otherwise with the new definition of the values ISEE and ISP including such incomes or properties in the calculation.

For students with incomes and/or properties exclusively abroad, who do not have the ISEE, EDUCatt will calculate the values ISEE and ISPE following the modalities indicated in paragraph 4.3.1.

## 5. CALCULATION OF THE ANNUAL FEE

The yearly fee is determined according to the economic condition of the student's family, considering the two parameters mentioned in paragraph 4 (ISEE and ISPE: the result of "ISP": "scala di equivalenza"). Starting from the ISEE value, the students will be assigned to one of the six income ranges. In relation to the income range, a different yearly fee is determined, according to the following chart<sup>12</sup>:

1 <sup>st</sup> range (fee A)	2 <sup>nd</sup> range (fee B)	3 <sup>rd</sup> range (fee C)	4 <sup>th</sup> range (fee D)	5 <sup>th</sup> range (fee D*)	6 <sup>th</sup> range (fee D**)
from € 0	from € 14,420.32	from € 17,709.35	from € 23,000.01	from € 28,285.55	Beyond the limits of fee D*
to € 14,420.31	to € 17,709.34	to € 23,000.00	to € 28,285.54	to € 37,337.22	

The students who have an ISEE value lower than € 23,000, but an ISPE higher than € 50,000, are still attributed fee D.

In case the ISEE includes a scholarship benefited by the student only, EDUCatt will proceed to decrease the value of the ISEE considering the amount of the scholarship in relation to the "scala di equivalenza".

<sup>12</sup> The chart is to be considered temporary and subject to modifications after the related legal documents are published.

**The students intending to pay the highest fee** (6<sup>th</sup> range, fee D\*\*) must declare it when applying online and will be therefore exempted from filling in the section of the family's economic situation.

## 6. REQUIREMENTS

In order to apply for **ADMISSION or READMISSION** at a discounted fee (lower than fee D\*\*) the **students must have the certification "ISEE per le prestazioni per il Diritto allo Studio Universitario", requested in the calendar year 2019, by the deadline for the application submission.**

*Italian and foreign students whose families generate incomes in Italy*


In order to have this document available by the deadline, the student or another member of the family has to go to any **CAAF** office (an authorized centre for fiscal assistance) or to other dedicated institutions, and request the "ISEE per le prestazioni per il diritto allo studio universitario". It generally takes 10 working days to have this documentation ready; therefore, the student must take this timing into account.

*Foreign students whose families generate incomes or hold assets abroad*

This category of students needs to make reference to paragraph 4.3 above.

### 6.1 Requirements for the admission into the Residential Colleges

In order to be admitted into one of the residential structures, students must meet all the requirements of this call and must apply online through their own personal MyEDUCatt web area: <http://myeducatt.unicatt.it/>.

 The students enrolling in the first year of a master degree who in the a.y. 2018/2019 were enrolled in the first year "fuori corso" of a bachelor degree can also apply, but only if they graduate from their bachelor degree within the summer (July 2019).

The general criteria for the creation of the rankings and the assignment of a place in one of the structures are listed below. These are to be integrated by the specific details related to each campus, as to the section "SPECIFIC DETAILS FOR EACH CAMPUS".

#### 6.1.1 General criteria for the creation of the rankings<sup>13</sup>

Income and merit-based requirements will be integrated by the results of a selection, which will have different features according to each campus. The evaluation of the applicants, quantified up to a maximum score of 100 points, will be based on:

- the academic merit previously acquired (40 points related to the grade of the most recent qualification: e.g. high school diploma or bachelor degree);
- the results of their interview with the Commission (60 points)

and will be aimed at assessing

- the applicants' potentialities, considering both the past career and the future intentions;
- their critical abilities;
- the reasons leading to their choice of the structure typology between college and residence
- their inclination to the life in a community context;

<sup>13</sup> This refers to students who are admissible for the assignment of a place in one of the structures of the campus where they are enrolling. The assignment of the specific residential college will be defined in paragraph 6.1.2 of the call.

- their inclination to take part actively and pro-actively in the educational proposal of the structures on campus.

The Commission's decisions **cannot be contested**.

Considering the total number of applicants in relation to the number of places available, the Commission will have the possibility to establish a minimum score to be included in the ranking.

*Students enrolling in the first year of a bachelor or a single-cycle degree*

The admissible students will be included in two rankings according to the range they belong to: the first ranking corresponding to fees A - B - C ; the second ranking corresponding to fees D - D\* - D\*\*<sup>14</sup>. The students belonging to fees A – B - C will take precedence over those included in fees D - D\* - D\*\*, who will be then assigned accommodation as long as there is space available in each Residential College (for boys and girls respectively).

EDUCatt will form the rankings according to the following criteria:

- For the students belonging to the income ranges A - B - C, the order of the ranking will be determined through the family unit's ISEE certification, in relation to the threshold of € 23,000.00 up to a maximum of 1000 points, using the following formula:

$$\left(1 - \frac{\text{student's ISEE}}{\text{threshold}}\right) \times 1000$$

Therefore, the order of the ranking goes from 1000 to 0.

ISEE =	0	1.000	(first place in the ranking)
		points	
ISEE =	23,000.	0 points	(last place in the ranking)
	00		

If two students have the same income range, the precedence will be taken by the student with the highest grade in the most recent academic qualification. In case their scores still coincide, the younger student takes precedence.

- For the students belonging to income ranges D-D\*-D\*\*, the ranking order will be based on the overall score obtained during the selections.

If two students have the same score, the precedence will be taken by the student with the lower income range. If, even in this case the students' scores coincide, the precedence will be taken by the student with the higher grade in the most recent academic qualification and in case they still have the same score, the younger student gets the higher position.

*Students enrolling in years after the first, in the first year of a master degree and in the first year of a specialization program or PhD activated through the following act: Decreto Ministeriale, 3 July 1998, n 210 art 4.*

EDUCatt will compile the rankings in accordance with the final score assigned by the Commission. In case two students get the same score, the student with the lower income range will take precedence; in case the income range also coincides, the student with the higher grade in the most recent qualification. In case the grade also coincides, the younger student will take precedence over the older one.

<sup>14</sup> In order to include the applicant in one of the two rankings, EDUCatt will take into account the information related to the family unit's economic situation provided ONLY within the dates of the application test.

### *6.1.2 Criteria for the acceptance of the preferences expressed by the applicant as to the choice of the Residential College*

EDUCatt will accept the preferences expressed in the online application taking into account:

- the student's overall final score;
- the opinion of the commission concerning the student's inclination to take part in the educational purpose of the structures on campus;
- the preferences expressed by the student as to the typology of structure (college/residence);
- the actual availability of places in each Residential College.

EDUCatt cannot guarantee the acceptance of all applicants' preferences: the applicant's preferences will be met according to the student's position in the ranking, until the places indicated as preference are exhausted.

The applicants indicated as not inclined to take part in the educational project of the colleges "on campus" will only be proposed the accommodation in one of the "urban" residences (even when included in the waiting list).

### *6.1.3 Students' acceptance of the place in the Residential College and EDUCatt management of the waiting list*

The results of the selection process will be communicated by email to all the students (admissible, included in the waiting list and non-admissible).

Admissible students can:

- accept the proposed accommodation following the given instructions
- send an email or a fax communicating that the DO NOT accept the proposed accommodation (the applicant will be removed from the ranking)
- send an email or a fax communicating that the DO NOT accept the proposed accommodation, but would like to be contacted if there is an alternative accommodation available in other residential structures (in this case, EDUCatt will not be able to later guarantee the actual availability of the alternative).

*Admissible students accepting the assigned place:*

- **must proceed to the down payment on the first instalment of the yearly accommodation fee** by the deadline indicated in the communication for the admission (the amount is specified in paragraph 10.1.1 of the call) and send a copy of the bank transfer to EDUCatt via email or fax;
- after this first step, they must sign the binding agreement between EDUCatt and themselves, which will be provided by EDUCatt at a later stage, and pay the remaining instalments according to the deadlines in paragraphs 10.1.1 and 10.1.2 of the call.

**Admissible students not performing the mandatory steps above will be classified as "willing to leave the structure".**

For those applicants who accept a place in the "urban" residences even if they previously declared a preference for the colleges "on campus", EDUCatt has the possibility to re-assign a place in the colleges "on campus", if there is still availability in the months following the communication of the outcomes for the re-admission. However, the re-assignment will be possible within and no later than the takeover in the actually assigned room.

In case the number of applicants considered admissible in the rankings is higher than the available accommodation places, a waiting list following the ranking order will be created and will be valid for 45 overall days (both working days and holidays).

In case an applicant renounces to the assigned place in a residential structure, the place left free will be proposed to the first student in the ranking included in one of the cases specified above, specifically:

- the applicant who did not accept the proposed place and asked to be included in the waiting list for other specific structures;
- the applicant who accepted a place in a “urban” structure even if previously declared a preference for the colleges “on campus”;
- the applicant in the waiting list.

The applicants who were assigned a place take precedence on those who resulted in the waiting list.

---

## 6.2 Requirements for the readmission in the Residential Colleges

---

### 6.2.1 General requirements

Provided they apply, **the categories of students who have the right to readmission** are the following ones:

- students enrolling up to the first year “fuori corso” of any degree course in the a.y. 2019/2020 (**NB.: the students who already attended the first year “fuori corso” of their bachelor degree will not then be allowed to readmission in the first year “fuori corso” of their master degree**);
- students enrolling in a regular year of a specialization program in the a.y. 2019/2020;
- students enrolling in a regular year of a PhD course in the a.y. 2019/2020, activated through the following act: *Decreto Ministeriale* 3 July 1998 n 210 art 4.

### 6.2.2 Specific requirements for the readmission

The students have the right to be readmitted, only if:

- a. they respected the internal regulation of the Residential College and actively participated in the educational project, and, in case of the on-campus colleges, if their interview with the Board directing the structure has had a positive outcome<sup>15</sup>;
- b. they have acquired and recorded the number of credits needed within 10 August 2019 (see the table with the academic credits for each year). EDUCatt could decide to partly or totally lower the merit-based requirement (only once during the student’s stay in the Residential College, and only for those credits lacking in relation to the requirement), due to serious health or family issues, that actually represented an obstacle to the regularity of the student’s studies. Such issues must be certified through proper documentation, which must be handed in at EDUCatt front offices in the student’s campus by the deadline for the readmission. The “discounted” credits will be considered forever recorded, also during the following years. Such reduction due to health or family issues will imply a fixed fee increase of € 600. **Communications sent after the application deadline will not be accepted**;
- c. they stayed in the Residential College for the whole previous academic year (please refer to the specific regulation of the structure);
- d. they do not have debts or other pending administrative issues with EDUCatt (e.g. pending payments from the previous a.y.);
- e. they proceeded to the down payment on the first instalment, as specified in paragraph 7.2 of the call.

✓ **Who else can apply for readmission:** the students enrolling in the first year of a master degree that were already admitted into a Residential College for the first year “fuori corso” of their bachelor degree, only if they graduate within the summer (July 2019).

---

<sup>15</sup> For the urban residences in agreement with EDUCatt, there is no formal interview, a positive opinion by the Board is required.

The readmission depends on the availability of places; moreover, a student who is enrolling in a second course year takes precedence on another student who is enrolling in a first course year. The students enrolled in a year “fuori corso” follow the regularly enrolled ones in the rankings. In case two or more students get the same score, the precedence will be given according to the following criteria:

1. the student with the lowest income;
2. the student with the farthest residence;
3. the younger student.

**The students already enrolled in Università Cattolica that intend to transfer to another campus** are automatically readmitted, but need to communicate it to EDUCatt as soon as possible and, anyhow, by the deadline of the application for readmission. The assignment of the structure will take into account the availability of places and will become effective only after the students’ interview with the Residential College board.

*The assignment of a place in a Residential College to readmitted students*

EDUCatt will inform the students through official communication of readmission. Afterwards, EDUCatt will give the students a binding agreement, summing up the economic details, in compliance with the fees as specified in the section “SPECIFIC DETAILS FOR EACH CAMPUS”.

## 7. DEADLINES AND PROCEDURES FOR THE APPLICATION SUBMISSION

### 7.1 Deadlines for the application submission for ADMISSION

As far as the deadline for the application submission for the admission in the Residential Colleges is concerned, students must refer to the section related to each campus.

Students must be aware that, if **the application is finalized after the deadline** (e.g. the certification “ISEE” is not available or compliant, etc.), EDUCatt will take only exceptional situations into account, and under explicit request by the applicant. Only the documentation received by September 2019 will be evaluated and, in case of acceptance, **the students will have to pay an extra fee of € 100 for extra administrative costs<sup>16</sup>**.

### 7.2 Deadlines and procedures for the application submission for READMISSION

In order to be readmitted, students must:

- apply online through their own personal web area <http://myeducatt.unicatt.it/> by **8 July 2019**;
- proceed to the down payment on **the first instalment of the yearly accommodation fee<sup>17</sup>** by **8 July 2019** (the amount is specified in paragraph 10.1.1 of the call) indicating, in the bank transfer purpose:
  - The student’s first and last name
  - "Acconto prima rata 2019/2020"
  - Name of the Residential College and
  - Business Partner (a code you will receive in the email containing the recap of the application submitted online).

<sup>16</sup> Such amount will not have to be paid by the students who, after the deadline for the application submission, are admitted in residential structures where there are available places not assigned during the selection phase.

<sup>17</sup> The down payment on the first instalment can be refunded ONLY if the student does not result as readmitted due to the lack of places in the residences and if the merit-based requirements not met.



The bank transfer is to be addressed to ENTE PER IL DIRITTO ALLO STUDIO UNIVERSITARIO – EDUCATT on the following bank account: (IBAN) IT79F0569601600000023684X49.

The students will be given instructions to fill in and submit the form while applying online.

Students must be aware that, if the application is finalized after the deadline (e.g. the certification “ISEE” is not available or compliant, etc.), EDUCatt will take only exceptional situations into account, and under explicit request by the applicant. Only the documentation received by September 2019 will be evaluated and, in case of acceptance, the students will have to pay an extra fee of € 100 for extra administrative costs.

## 8. SUBMISSION OF APPEALS

---

Any possible appeal concerning actual mistakes made by EDUCatt during the evaluation must be submitted within 15 working days after the publication of the rankings.

EDUCatt will only take into account the documents received by:

- the dates of the admission test
- the deadline for the online application for readmission.

NB: The student who does not provide a document within the deadline or who provides an irregular one will be automatically excluded from the selection.

## 9. INCOME-BASED FEES

---

### 9.1 Fees

---

The fee is subdivided into 3 instalments calculated as follows:

**1<sup>st</sup> instalment**, corresponding to the sum of:

- + the damage deposit
- + the internal activities (if any)
- + 4/11 of the accommodation fee
- + 4/11 of the food service fee (if any)
- + 4/11 of the fee for the changing of the bed linen (if any)

**2<sup>nd</sup> instalment**, corresponding to the sum of:

- + 3/11 of the accommodation fee
- + 3/11 of the food service fee (if any)
- + 3/11 of the fee for the changing of the bed linen (if any)

**3<sup>rd</sup> instalment**, corresponding to the sum of:

- + 4/11 of the accommodation fee
- + 4/11 of the food service fee (if any)
- + 4/11 of the fee for the changing of the bed linen (if any)

### 9.2 Damage deposit

---

To be precise, the **damage deposit** is meant to cover:

- damages to the structure or missing items, if any
- part of the fee not yet paid
- contributions for the management of unsolved credits in case of delayed payments
- other late payments due and not paid.

In case of readmission, the students must integrate the damage deposit: it must consist of the overall initial amount defined by the current application regulation. The modalities for the payment of this integration will be indicated directly by EDUCatt to the involved students.

## 10. PAYMENT AND PARTICULAR CONDITIONS

The fee is to be intended as a forfeit and the student must pay all the instalments by the deadline. EDUCatt will inform the students of the due amount and deadline via email, **but in case the students do not receive the email referred above, they are not exempted from the obligations related to the payment.**

### 10.1 Payment of the fee

#### 10.1.1 Down payment on the 1st instalment

The first instalment foresees the down payment of € 500 to be made by the following deadlines:

- **readmitted students:** by **8 July 2019**, according to the modalities indicated in the news on EDUCatt website [www.educatt.it](http://www.educatt.it);
- **newly admitted students:** according to the modalities and by the deadline indicated in the official communication about the admission.

**⚠ N.B.:** in case the student does not proceed to the down payment on the 1st instalment by the indicated deadline leads to the loss of the right to the assigned place. In case the admission/readmission is still accepted, the student will have to pay the additional fee of € 100 as extra administrative costs.

#### 10.1.2 Payment of the balance for the 1st instalment and the following instalments

The payment of the instalment must be made by the following deadlines:

- Balance 1<sup>st</sup> instalment: **15 November 2019**
- 2<sup>nd</sup> instalment: **15 January 2020**
- 3<sup>rd</sup> instalment: **15 March 2020**

The instalments must be paid to EDUCatt through the payment slips (“MAV”) available in the students’ personal MyEDUCatt area, accessible through EDUCatt website ([www.educatt.it](http://www.educatt.it)).

If the payment is made after the deadline, the amount of € 50 for the management of unsolved credits will be deducted from the **damage deposit**.

In case the students don’t proceed to the payment by the deadline indicated in the reminder, they must leave the structure and pay the due amounts.

#### *STUDENTS “BENEFICIARY” of EDUCATT SCHOLARSHIPS*

This category of students will not have to pay the instalments after the first one, because these will be deducted from the amount of their scholarship. **These students will be attributed fee C, which is the one corresponding to the third income range.** The students “fuori corso” will be informed about the due instalments and will be given their scholarship separately.

#### *STUDENTS “ADMISSIBLE BUT NON-BENEFICIARY” of EDUCATT SCHOLARSHIPS*

While waiting for the DEFINITIVE outcomes of EDUCatt scholarships (usually available in the month of February), all the admissible but non-beneficiary students will be suspended from the payment of the fees (apart from the “fuori corso” students). Once the DEFINITIVE outcomes are available, the admissible but non-beneficiary students must pay the accommodation fee

according to their income range. The admissible but non-beneficiary students that will become beneficiary in the FINAL rankings (generally available in the months of May/June) will receive their scholarship, which will be calculated by deducting the due amount of money corresponding to the third income range (fee C). If there are any payments still due, these will also be deducted from the final amount of the scholarship.

#### *STUDENTS "ADMISSIBLE BUT NON-BENEFICIARY" AND "BENEFICIARY" of EDUCATT SCHOLARSHIPS*

The amounts due by EDUCatt to the students who had the outcomes "admissible" or "beneficiary" of EDUCatt scholarship will be compensated, also on behalf of Università Cattolica, with the – expired or to expire - accommodation instalments due by the students to EDUCatt.

#### *10.1.3 Renouncing the assigned place*

The students who are admitted or readmitted for the entire academic year and want to renounce the assigned place must fill in **the form** available in the area "Links" of the website page [www.educatt.it/collegi](http://www.educatt.it/collegi). Such form must be signed both by the student and by the manager of the involved residential structure, and it is valid from the day it is handed to the Financial Support Office of EDUCatt in the campus the student attends.

The students who renounce to the assigned place must pay:

Date	To be paid
1. By 30/09/2019	Down payment on the 1st instalment
2. By 31/12/2019	1st instalment
3. By 31/03/2020	1 <sup>st</sup> and 2 <sup>nd</sup> instalments
4. After 31/03/2020	All the instalments

**It is important to underline that students admitted and hosted for the very first time in a residential structure who renounce to the assigned place by 31/03/2020 will not be paid back the already transferred damage deposit. In case readmitted students renounce, they will be paid back only the due remaining part of the damage deposit. Furthermore, all the students renouncing to the assigned will have to pay the due amounts indicated in paragraph 9.2, if any, independently from the damage deposit.**

#### **10.3 Checking the admissibility requirements during the academic year**

If the students already staying in a Residential College<sup>18</sup> do not meet the merit-based requirements, they will be allowed to stay until the end of the academic year, only if they make a formal request which must be accepted by the Residential College board. The conditions under which the students are allowed to stay include the payment in compliance with fee D\*\* plus the forfeit increase of € 600. Otherwise, they will be obliged to leave immediately the assigned place, paying the total amount of the yearly fee D\*\* plus the forfeit increase of € 600. The students enrolled in the course "Medici Interni Frequentatori" in Rome, applying online for admission as first-year students in the a.y. 2019/2020, will have an increased fee (fee D\*\*), in case they do not actually enrol according to later verifications.

#### **10.4 Temporary exit or definitive expulsion from the Residential College**

The students can be expelled from the structure if the cases foreseen in the regulation of each structure take place. EDUCatt is not expected to refund the students for the months already

<sup>18</sup> E.g.: if the students did not actually enroll in the university or differently from their self-declarations or if they did not meet the merit-based requirements in the a.y. 2019/2020.

paid but not spent in the structure. In case of expulsion, the procedure is the one specified in paragraph 10.1.3 for students leaving the structure earlier than expected.

---

### 10.5 Assignment of the rooms

---

EDUCatt cannot guarantee the satisfaction of all students' preferences as to the room, in case the Residential College has different options available (single or double rooms, private bathrooms, etc.). The assignment of the specific room typology takes the availability and the characteristics of the structure into account, as well as any medical documentation, if submitted by the application deadline for admission/readmission. The Residential College board is responsible for the assignment of the room, which cannot be contested. During the assignment, no further documentation will be evaluated but the one provided by the application deadline for admission/readmission.

---

### 10.6 Further conditions

---

By the last day of their stay in the Residential College, the students must:

- leave the room taking away all their personal belongings;
- let the staff check the conditions of the rooms and furniture;
- hand in the key/badge at the reception.

If they do not do what is required above, they will lose the right to the refund of the damage deposit; in case of damages, if the damage deposit is not enough, they will have to pay the remaining amount of money to cover all the expenses. EDUCatt can also decide not to give back the damage deposit in case of pending payments.

The students admitted during the academic year will have to pay a fee corresponding to the number of months they have spent in the Residential College, together with the whole amount required for the damage deposit, the internal activities and the changing of bed linens, if any. The monthly amount is conventionally considered as 1/11 of the whole fee; a stay up to 15 days corresponds to 1/22 of the yearly fee (half a month), whereas, starting from the sixteenth day, 1/11 of the fee is due (all the monthly amount).

Admitted and readmitted students accepting the assigned place must physically move into their room within three days after the official start of the lessons. Only in case the students are seriously prevented from being there on that date, they can explain the situation to the structure management and decide a new check-in date which, however, cannot be later than 20 days from the beginning of university courses. Otherwise, the students will lose their right to the assigned place.

Damages to things, structures, people and/or third parties will be attributed jointly to all the students living in the structure, except if any individual responsibility is certified.

EDUCatt is not responsible for the damage or theft of the students' personal belongings. EDUCatt cannot be held responsible for robberies or damages to personal belongings stored in the structure.

## 11. OPENING PERIOD OF THE RESIDENTIAL COLLEGES

---

The opening period of the Residential Colleges is conventionally from the beginning of September to the end of July, with a closing during holidays (Christmas and Easter). EDUCatt can slightly modify the closing dates, taking the academic calendar into account.

Newly admitted students can move into the structure from the Sunday before the start of the lessons, and in the case of Milan and Piacenza campuses, not before 9 September 2019 due to organizational reasons.

Readmitted student can move into their rooms in compliance with their exams dates, and as agreed with the structure management.

When there are fewer students on campus during the periods mentioned above, only some structures may be left open, and students may temporarily be hosted somewhere else from the assigned structure. The same happens in case of organizational necessities or if any structural repairs take place.

This also applies to food service, where any: the students may be asked to use other structures at the same conditions.

**EDUCatt may accept requests for a stay during the closing period only after having verified the availability of a structure and charging the student an extra contribution in relation with the length of the stay and the benefited services.**

## 12. CHECKS ABOUT THE ECONOMIC CONDITIONS

---

EDUCatt has the right to verify the students' declarations in compliance with the following Italian acts: legge 2 December 1991 n. 390, art. 22 and Decreto del Presidente della Repubblica 28 December 2000 n. 445, art. 71. EDUCatt could also ask for any economic documentation useful as to the verification on the accuracy of the declaration (e.g.: Mod.730, Mod. Unico, Dichiarazione IVA, etc.) EDUCatt, in agreement with the competent financial authorities, such as *Agenzia delle Entrate, Direzione Regionale della Lombardia, Ministero delle Finanze, Guardia di Finanza* will verify the effective accuracy of the self-certifications by the students provided with any of the benefits, specifically referring to the following Italian law: art. 71 D.p.r. 445/2000

The penalties for false declarations foreseen by the Italian acts artt. n. 75 and n. 76 D.p.r. 445/2000 and 10 comma 3 D.lgs. 68/2012 consist in giving back three times as much as the money benefited to the institution providing the benefit, in the loss of any right to benefits throughout the entire academic career, except for the possible application of penal acts if any crime is committed. In case of false or mendacious declarations, EDUCatt can decide on the penalty to apply: in the worst case it implies the expulsion and the payment of the highest amount of the entire yearly fee (fee D\*\*).

Pursuant art. 2947 of Codice Civile, the verifications can be made within 5 years from the last provision of an undue benefit and the consequent false self-declaration, as better specified in the Italian official document for the call.

## 13. INFORMATION NOTICE ON THE PROCESSING OF PERSONAL DATA (EU REGULATION 2016/679)

---

EDUCatt - Ente per il Diritto allo Studio Universitario dell'Università Cattolica - is the Controller of the processing of personal data.

Internal and external people have been appointed as regards to this issue.

A Data Protection Officer, D.P.O., has also been appointed and is available at [privacy@educatt.org](mailto:privacy@educatt.org).

### *Purposes of the processing*

The personal data acquired through the web application procedure are collected by EDUCatt and used, including electronically, in order to allocate the benefits requested, for statistical evaluations, for communications related to activities/services proposed by EDUCatt and, in any case, in response to a request from the party concerned and for the purposes of law.

### *Legal basis for the treatment*

Personal data are processed in response to a request from the party concerned and for the purposes of law. Personal information must necessarily be provided in order to verify the financial status of the declarant's household, the requirements for access to the benefit and its determination, according to the criteria indicated in this application. Failure to provide necessary personal data or to grant the consent to process any potentially sensitive data prevents possibility of application.

### *Communication*

For the purposes of legitimate checks, data may be exchanged between bodies including Entities or competent Authorities, such as the Ministry of Finance and the Guardia di Finanza.

### ***Rights of the Data subject***

In accordance with art 13 of EU Regulation 2016/679 the data subjects have the right to:

- ask the Controller to access, cancel, rectify or restrict processing their data;
- object to processing their data;
- exercise their right to data portability;
- revoke, at any time, the consent given for information and promotion purposes as referred to in paragraph 3.c, without however affecting the lawfulness of the processing based on the consent given before its withdrawal;
- lodge a complaint with a supervisory Authority.

The rights described above may be exercised by sending a request made without a formal procedure to the Data Controller or to the DPO.

## SPECIFIC DETAILS FOR EACH CAMPUS

### 1. MILAN CAMPUS

#### 1.1 The structures (colleges and residences)

Name	Address and telephone number
AUGUSTINIANUM (m)	Via L. Necchi 1 - 20123 Milan - tel.+39 02.72172001
LUDOVICIANUM (m)	Via S. Vittore 35 - 20123 Milan - tel.+39 02.433571
MARIANUM (f)	Via S. Vittore 18 - 20123 Milan - tel.+39 02.499891
PAOLO VI (f)	Via A. Verga 9 - 20144 Milan - tel.+39 02.499631
ORSOLINE MISSIONARIE DEL S. CUORE (f)	Via A. Martignoni 8 - 20124 Milan - tel.+39 02.6688999
STIMMATINE FRANCESCANE (f)	Via Maroncelli 28 - 20154 Milan - tel.+39 02.6595569 - 02.6599172
RESIDENZA BUONARROTI (m/f)	Piazza Buonarroti 30 – 20149 Milan – tel.+39 02.43633300
CAMPUS MONNERET (m)	Via Ugo Monneret de Villard 1 - 20134 Milan – tel.+39 02.83427670

#### 1.2 Requirements for the admission

In order to be admitted in the Residential Colleges, students must satisfy the requirements foreseen in the general regulation for all the campuses. In addition, they must:

- ☞ **apply** for the **online** admission following the procedure at <http://myeducatt.unicatt.it/> by **19 July 2019**;
- ☞ **pay** € 100 as non-refundable contribution related to the expenses of the selection, via bank transfer in the name of ENTE PER IL DIRITTO ALLO STUDIO UNIVERSITARIO – EDUCATT, using the following IBAN code: IT79F0569601600000023684X49 (€ 50 for the students who took the test for the merit-based scholarships promoted by Università Cattolica on 1<sup>st</sup> June 2019);
- ☞ **participate in the selections** as specified on the website [www.educatt.it](http://www.educatt.it) and on [www.collegiunicattolica.it](http://www.collegiunicattolica.it).

EDUCatt will send the official communication of the admission with the details for the down payment on the first instalment via email.

#### 1.3 Deadlines for the application submission and the delivery of the documents

The application for the admission must be submitted exclusively online at <http://myeducatt.unicatt.it/> by **15 July 2019**.

Instructions and modalities to fill in the form are explained in the procedure itself.

Possible applications received after the deadline will be taken into account only in case there is still availability of places.

#### 1.4 Modalities of the selection process

The tests and the criteria for the selection process correspond to what indicated in paragraph 6.1.1 of the general regulation valid for all the campuses.

#### 1.5 Income-based discounted fees

The yearly fee is a **forfeit** related to the income ranges, as specified in the following section.

Students benefiting from EDUCatt scholarship are attributed **fee C** (see paragraph 9 of the general regulation for all campuses).

In case some money dedicated to internal activities is left at the end of the stay, it will be kept by the structure for the following academic year.



### Augustinianum

The accommodation in this structure necessarily implies benefiting also from the food service, as specified below.

#### Yearly accommodation fees

Fee range	Place in a double room	Place in a single room
A	1,785	2,885
B	2,020	3,120
C	2,635	3,735
D	4,110	5,210
D*	4,510	5,610
D**	4,810	5,910

In this structure there are mainly **single rooms**. All the rooms have a **private bathroom**.

In addition to the accommodation fee as to the chart above, the students must also pay:

- € 500 as refundable interest-free damage deposit, paid back to the student when leaving the college, (the amount is reduced to 300 € for readmitted students, because of the sum already paid in a.y. 2018/2019);
- € 100 as a contribution for the internal activities;
- € 130 as forfeit for the scheduled changing of bed linens.

In order to use the gym, a currently valid certificate of fitness must be provided by the student.

#### Yearly food service fees

Fee range	Food service
A	1,190
B	1,310
C	1,770
D	2,290
D*	2,290
D**	2,290

The fee includes lunch and dinner in the canteen located in Necchi 9, from Monday to Friday. On Saturday, Sunday and during holidays, the students can go to other EDUCatt structures, which will be communicated to the students remaining in the residences.

In case it is not possible to provide the students with a meal in the Residential College, the food service will take place in other structure indicated by EDUCatt.





### Ludovicianum

The accommodation in this structure necessarily implies benefiting also from the food service, as specified below.

#### Yearly accommodation fees

Fee range	Place in a double room	Place in a single room
A	1,465	2,565
B	1,710	2,810
C	2,305	3,405
D	3,675	4,775
D*	4,020	5,120
D**	4,380	5,480

In this structure there are mainly **single rooms**. All the rooms have a **private bathroom**.

In addition to the accommodation fee as to the chart above, the students must also pay:

- € 500 as refundable interest-free damage deposit, paid back to the student when leaving the college, (the amount is reduced to 300 € for readmitted students, because of the sum already paid in a.y. 2018/2019);
- € 100 as a contribution for the internal activities;
- € 130 as forfeit for the scheduled changing of bed linens.

#### Yearly food service fees

Fee range	Food service
A	1,190
B	1,310
C	1,770
D	2,290
D*	2,290
D**	2,290

The fee includes lunch and dinner Monday to Friday in the canteen located in Necchi 9 or at the Residential College Marianum in via San Vittore 18. On Saturday, Sunday and holidays the students can go to the structures managed by EDUCatt that will be communicated.

In case it is not possible to provide the students with a meal in the Residential College, the food service will take place in other structure indicated by EDUCatt.



### Marianum

The accommodation in this structure necessarily implies benefiting also from the food service, as specified below.

#### Yearly accommodation fees

Fee range	Place in a double room with private bathroom	Place in a single room with external bathroom	Place in a double room with private bathroom
A	1,865	2,665	2,965
B	2,110	2,910	3,210
C	2,705	3,505	3,805
D	4,200	5,000	5,300
D*	4,545	5,345	5,645
D**	4,900	5,700	6,000

In this structure there are mainly **single rooms** and all the rooms have a **private bathroom**.

In addition to the accommodation fee as to the chart above, the students must also pay:

- € 500 as refundable interest-free damage deposit, paid back to the student when leaving the college, (the amount is reduced to 300 € for readmitted students, because of the sum already paid in a.y. 2018/2019);
- € 100 as a contribution for the internal activities;
- € 130 as forfeit for the scheduled changing of bed linens.

In order to use the gym, a currently valid certificate of fitness must be provided by the student.

### Yearly food service fees

Fee range	Food service
A	1,390
B	1,650
C	2,100
D	2,700
D*	2,700
D**	2,700

The fee includes breakfast, lunch and dinner in the canteen located in Necchi 9 from Monday to Friday. On Saturday, Sunday and during holidays the students can go to the structures managed by EDUCatt that will be communicated. In case it is not possible to provide the students with a meal in the Residential College, the food service will take place in other structures indicated by EDUCatt.



### Paolo VI

The accommodation in this structure necessarily implies benefiting also from the food service, as specified.

### Yearly accommodation fees

Fee range	Place in a double room	Place in a single room
A	1,595	2,695
B	1,800	2,900
C	2,395	3,495
D	3,770	4,870
D*	4,110	5,210
D**	4,410	5,510

In this structure there are mainly **single rooms**. All the rooms have a **private bathroom**.

In addition to the accommodation fee as to the chart above, the students must also pay:

- € 500 as refundable interest-free damage deposit, paid back to the student when leaving the college, (the amount is reduced to 300 € for readmitted students, because of the sum already paid in a.y. 2018/2019);
- € 100 as a contribution for the internal activities;
- € 130 as forfeit for the scheduled changing of bed linens.

In order to use the gym, a currently valid certificate of fitness must be provided by the student.

### Yearly food service fees

Fee range	Food service
A	1,390
B	1,650
C	2,100
D	2,700
D*	2,700
D**	2,700

The fee includes breakfast, lunch and dinner in the canteen located in Necchi 9 from Monday to Friday. On Saturday, Sunday and during holidays the students can go to the structures managed by EDUCatt that will be communicated.

In case it is not possible to provide the students with a meal in the Residential College, the food service will take place in other structure indicated by EDUCatt.



### *Suore Orsoline and Suore Stimmatine*

#### *Yearly accommodation fees*

Fee range	Place in a double room	Place in a single room
A	1,295	2,395
B	1,540	2,640
C	1,985	3,085
D	3,240	4,340
D*	3,480	4,580
D**	3,780	4,880

All the rooms, either **single** or **double**, have an **external bathroom**<sup>19</sup>.

In addition to the accommodation fee as to the chart above, the students must also pay:

- € 500 as refundable interest-free damage deposit, paid back to the student when leaving the college, (the amount is reduced to 300 € for readmitted students, because of the sum already paid in a.y. 2018/2019);
- € 100 as a contribution for the internal activities;
- € 130 as forfeit for the scheduled changing of bed linens.

In order to use the gym, a currently valid certificate of fitness must be provided by the student.



### *Residenza Buonarroti*

#### *Yearly accommodation fees*

Fee range	Place in a single room
A	2,975
B	3,210
C	3,815
D	5,300
D*	5,645
D**	6,000

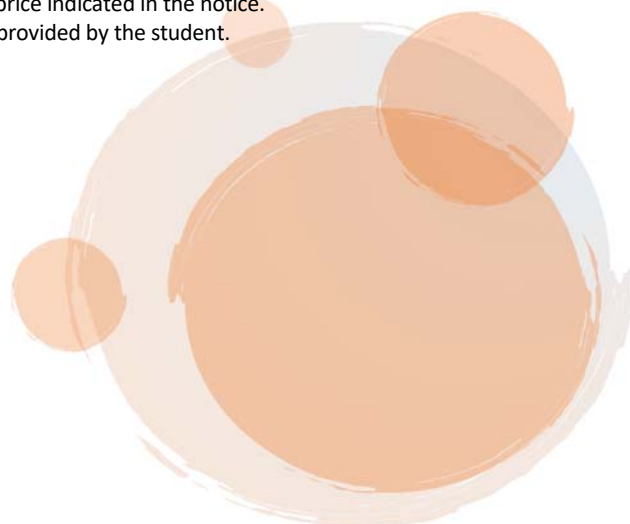
All the rooms are **single rooms** with a **private bathroom**.

In addition to the accommodation fee as to the chart above, the students must also pay:

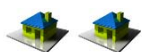
- € 500 as refundable interest-free damage deposit, paid back to the student when leaving the college, (the amount is reduced to 300 € for readmitted students, because of the sum already paid in a.y. 2018/2019);
- € 100 as a contribution for the internal activities;
- € 130 as forfeit for the scheduled changing of bed linens.

The guests can have breakfast, lunch or dinner in the residence at the price indicated in the notice.

In order to use the gym, a currently valid certificate of fitness must be provided by the student.



<sup>19</sup> The so-called "external bathroom" is still a private bathroom, but shared among a limited number of people staying in the rooms nearby them.



### Campus Monneret

#### Yearly accommodation fees

Fee range	Place in a double room
A	1,975
B	2,220
C	2,815
D	3,925
D*	4,100
D**	4,400

In this structure all the rooms are **double** with a **private bathroom**.

In addition to the accommodation fee as to the chart above, the students must also pay:

- € 500 as refundable interest-free damage deposit, paid back to the student when leaving the college, (the amount is reduced to 300 € for readmitted students, because of the sum already paid in a.y. 2018/2019);
- € 130 as forfeit for the scheduled changing of bed linens.

## 2. BRESCIA CAMPUS

### 2.1 The structures (colleges and residences)

Name	Address and telephone number
SACRO CUORE (f)	Via Martinengo da Barco 2 - 25121 Brescia - tel.+39 030.42242
SAN GIORGIO (m)	Via G. Galilei 67 - 25128 Brescia - tel.+39 030.3701183

### 2.2 Requirements for the admission

In order to be admitted in the Residential Colleges, students must satisfy the requirements foreseen in the general regulation for all the campuses. In addition, they must:

- ☞ **apply online** for the admission following the procedure at <http://myeducatt.unicatt.it/> by 20 September 2019;
- ☞ **pay** € 50 as non-refundable contribution for the expenses of the selection process (free for the students who took the test for the merit-based scholarships promoted by Università Cattolica on 1<sup>st</sup> June 2019). The payment must be made on the following bank account:

IBAN: IT79F0569601600000023684X49 registered in the name of ENTE PER IL DIRITTO ALLO STUDIO UNIVERSITARIO – EDUCATT.

### 2.3 Deadlines for the application submission and the delivery of the documents

The application for the admission must be submitted exclusively online at <http://myeducatt.unicatt.it/> by **20 September 2019**.

Instructions and modalities to fill in the form are explained in the procedure itself.

Possible applications received after the deadline will be considered only in case there are still places available. The modalities of the later admission will be communicated on [www.educatt.it](http://www.educatt.it).

### 2.4 Modalities of the selection process

The applicants must contact the Financial Support Office in EDUCatt to arrange a meeting to see the structure and be interviewed by the person in charge of the structure management. Subsequently they will be communicated the outcome (admitted/readmitted) and the modalities for the assignment of the place, that will be confirmed through the down payment on the first instalment.

### 2.5 Assignment of the place

The admitted students will be notified the assigned Residential College and the income range for the yearly fee.

The places are assigned according to the expressed preferences, until exhaustion and taking into account the students' needs.

### 2.6 Income-based discounted fees

The yearly fee **is a forfeit** related to the income ranges, as specified in the following section. Students benefiting from EDUCatt scholarship are attributed **fee C** (see paragraph 9 of the general regulation for all campuses.)

In case some money dedicated to internal activities is left at the end of the stay, it will be kept by the structure for the following academic year.



### Sacro Cuore

#### Yearly accommodation fees

Fee range	Place in a double room with external bathroom	Place in a single room with private bathroom	Place in a single room with external bathroom	Place in a single room with private bathroom
A	1,195	1,495	2,295	2,595
B	1,440	1,740	2,540	2,840
C	1,815	2,115	2,915	3,215
D	2,645	2,945	3,745	4,045
D*	2,825	3,125	3,925	4,225
D**	3,020	3,320	4,120	4,420

In this structure there are mainly **double rooms**. All the rooms have at least one **external bathroom**.

In addition to the accommodation fee as to the chart above, the students must also pay:

- € 500 as refundable interest-free damage deposit, paid back to the student when leaving the college, (the amount is reduced to 300 € for readmitted students, because of the sum already paid in a.y. 2018/2019);
- € 100 as a contribution for the internal activities.



### San Giorgio

The accommodation in this structure necessarily implies benefiting also from the food service, as specified below.

#### Yearly accommodation fees

Fee range	Place in a double room	Place in a single room
A	1,875	2,975
B	2,110	3,210
C	2,715	3,815
D	3,780	4,880
D*	4,050	5,150
D**	4,360	5,460

In this structure all the rooms, either **single** or **double**, have a **private bathroom**.

In addition to the accommodation fee as to the chart above, the students must also pay:

- € 500 as refundable interest-free damage deposit, paid back to the student when leaving the college, (the amount is reduced to 300 € for readmitted students, because of the sum already paid in a.y. 2018/2019);
- € 100 as a contribution for the internal activities.

#### Yearly food service fees

Fee range	Food service
A	800
B	930
C	1,080
D	1,490
D*	1,490
D**	1,490

The fee includes breakfast (Mon to Sat) and dinner (Mon to Friday).

In case it is not possible to provide the students with a meal in the Residential College, the food service will take place in another structure indicated by EDUCatt.

## 3. PIACENZA CAMPUS

### 3.1 The structures (colleges and residences)

Name	Address and telephone number
SANT'ISIDORO (m/f)	Via dell'Anselma 7 - 29100 Piacenza - tel.+39 0523.621111
RESIDENZA GASPARINI (m/f)	Via dell'Anselma 9 - 29100 Piacenza- tel.+39 0523.621111

### 3.2 Requirements for the admission

In order to be admitted in the Residential Colleges, students must satisfy the requirements foreseen in the general regulation for all the campuses. In addition, they must:

- ☞ **apply online** for the admission following the procedure at <http://myeducatt.unicatt.it/> by ...
- ☞ **pay** € 100 as non-refundable contribution for the expenses of the selection process. The payment must be made on the following bank account:  
IBAN: IT79F0569601600000023684X49 registered in the name of ENTE PER IL DIRITTO ALLO STUDIO UNIVERSITARIO – EDUCATT (€ 50 for the students who took the test for the merit-based scholarships promoted by Università Cattolica on 1<sup>st</sup> June 2019).
- ☞ **participate in the selection** as specified on the website [www.educatt.it](http://www.educatt.it) and on [www.collegiunicattolica.it](http://www.collegiunicattolica.it).

EDUCatt will send the official communication of the admission with the details for the down payment on the first instalment via email.

### 3.3 Deadlines for the application submission and the delivery of the documents

The application for the admission must be submitted exclusively online on <http://myeducatt.unicatt.it/> by **12 July 2019**.

Instructions and modalities to fill in the form are explained in the procedure itself.

Possible applications received after the deadline will be considered in case there is still availability of places. The modalities of the later admission will be communicated on [www.educatt.it](http://www.educatt.it).

### 3.4 Modalities of the selection process

The tests and the criteria for the selection process correspond to what indicated in paragraph 6.1.1 of the general regulation valid for all the campuses.

### 3.5 Income-based discounted fees

The yearly fee **is a forfeit** related to the income ranges, as specified in the following section. Students benefiting from EDUCatt scholarship are applied the fee for **range C** (see point 9 of the general regulation for all campuses).

In case some money dedicated to internal activities is left at the end of the stay, it will be kept by the structure for the following academic year.



### Sant'Isidoro

The accommodation in this structure necessarily implies benefiting also from the food service, as specified below.

#### Yearly accommodation fees

Fee range	Place in a single room
A	2,315
B	2,560
C	3,045
D	4,325
D*	4,670
D**	5,020

In this structure there are only **single rooms** with a **private bathroom**.

In addition to the accommodation fee as to the chart above, the students must also pay:

- € 500 as refundable interest-free damage deposit, paid back to the student when leaving the college, (the amount is reduced to 300 € for readmitted students, because of the sum already paid in a.y. 2018/2019);
- € 100 as a contribution for the internal activities;
- € 130 as forfeit for the scheduled changing of bed linens.

#### Yearly food service fees

Fee range	Food service
A	1,190
B	1,320
C	1,770
D	2,290
D*	2,290
D**	2,290

The fee includes breakfast, lunch and dinner (except for: dinner on Saturday, all meals on Sunday and holidays). Drinks are included. In case it is not possible to provide the students with a meal in the Residential College, the food service will take place in other structures indicated by EDUCatt.



### Residenza Gasparini

The accommodation in this structure necessarily implies benefiting also from the food service, as specified below.

#### Yearly accommodation fees

Fee range	Place in a single room
A	2,385
B	2,640
C	3,125
D	4,655
D*	5,030
D**	5,400

In this structure there are only **single rooms** with a **private bathroom**.

In addition to the accommodation fee as to the chart above, the students must also pay:

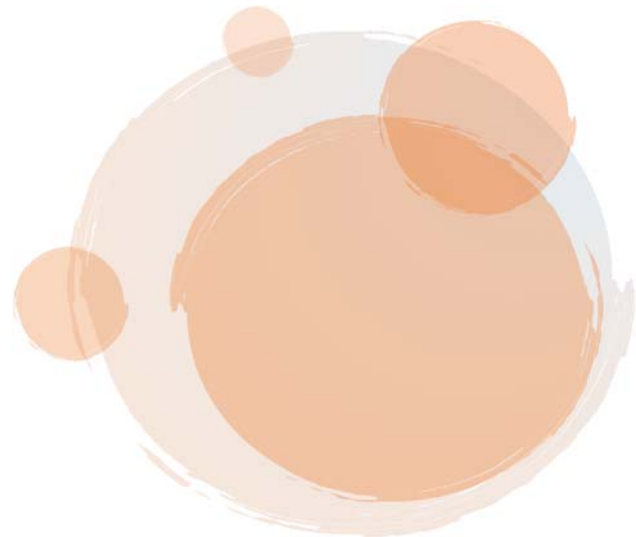
- € 500 as refundable interest-free damage deposit, paid back to the student when leaving the college, (the amount is reduced to 300 € for readmitted students, because of the sum already paid in a.y. 2018/2019);
- € 100 as a contribution for the internal activities;
- € 130 as forfeit for the scheduled changing of bed linens.



*Yearly food service fees*

Fee range	Food service
A	1,190
B	1,320
C	1,770
D	2,290
D*	2,290
D**	2,290

The fee includes breakfast, lunch and dinner (except for: dinner on Saturday, all meals on Sunday and holidays). Drinks are included. In case it is not possible to provide the students with a meal in the Residential College, the food service will take place in other structures indicated by EDUCatt.



## 4. ROME CAMPUS

### 4.1 The structures (colleges and residences)

Name	Address and telephone number
SAN DAMIANO (m)	Via di Villa Maggiorani 16 - 00168 Rome - tel.+39 06.3500001
KER MARIA (f)	Via E. Tanzi 67 - 00135 Rome - tel.+39 06.3060811
NUOVO JOANNEUM (m)	Largo F. Vito 1 - 00168 Rome - tel.+39 06.3054020 - 3054021 – 3054079
SAN LUCA - ARMIDA BARELLI (f)	Largo F. Vito 1 - 00168 Rome - tel.+39 06.3051164 - 3051155 – 3051862
IL ROMITELLO (m)	Via Vincenzo Viara de' Ricci 24 - 00168 Rome - tel.+39 06.3010023
SACRA FAMIGLIA (f)	Via Achille Mauri 14 - 00135 Rome - tel.+39 06.30600985
CAPITANIO (f)	Via Camilluccia 740 - 00135 Rome - tel.+39 06.3294273
RENZI (m)	Via Augusto Tebaldi 24 - 00168 Rome - tel.+39 06.35503947 - +39 06.35500850

### 4.2 Requirements for the admission

In order to be admitted in the Residential Colleges, students must satisfy the requirements foreseen in the general regulation for all the campuses. In addition, they must:

- ☞ **apply online** for the admission following the procedure at <http://myeducatt.unicatt.it/> by the different deadlines specified below:
  - Faculty of Medicine (single-cycle) and Dentistry: **15 July 2019**
  - Faculty of Economics (1<sup>st</sup> phase): **15 July 2019**
  - Faculty of Economics (2<sup>nd</sup> phase), Faculty of Pharmacy and bachelor and master degree courses of the Faculty of Medicine **from 6 until 16 September 2019**
- ☞ **participate in the selections** as specified on the website [www.educatt.it](http://www.educatt.it) and on [www.collegiunicattolica.it](http://www.collegiunicattolica.it).

EDUCatt will send the official communication of the admission, with the details for the down payment on the first instalment.

### 4.3 Deadlines for the application submission and the delivery of the documents

The students must apply for the online admission following the procedure at <http://myeducatt.unicatt.it/> by the different deadlines specified below:

- Faculty of Medicine (single-cycle) and Dentistry: 15 July 2019
- Faculty of Economics (1<sup>st</sup> phase): 15 July 2019
- Faculty of Economics (2<sup>nd</sup> phase), Faculty of Pharmacy and bachelor and master degree courses of the Faculty of Medicine from 6 until 16 September 2019.

Instructions and modalities to fill in the form are explained in the procedure itself.

Possible applications received after the deadline will be considered in case there is still availability of places. The modalities of the later admission will be communicated on [www.educatt.it](http://www.educatt.it).

### 4.4 Modalities of the selection process

According to the faculty, the selection process foresees what follows:

#### *Medicine and Dentistry*

**In this case the selection consists in the test for the access to the faculty.**

The tests and criteria for the selection process correspond to what is indicated in paragraph 6.1.1 of the general regulation valid for all the campuses, together with the final rankings for

the access in the faculty. You can find the specific details on [www.educatt.it](http://www.educatt.it): there is a dedicated pre-admission application to be submitted by May 2019.

#### *Economics, Pharmacy and bachelor degree courses of the Faculty of Medicine*

The tests and the criteria for the selection process correspond to what indicated in paragraph 6.1.1 of the general regulation taking into account the final rankings for the access in the faculty, the high school diploma grade as well as the outcome of the interview with the commission. A maximum score of 100 points can be assigned.

### 4.5 Income-based discounted fees<sup>20</sup>

The yearly fee **is a forfeit** related to the income ranges, as specified in the following section. Students benefiting from EDUCatt scholarship are applied the fee for **range C** (see paragraph 9 of the general regulation for all campuses).

In case some money dedicated to internal activities is left at the end of the stay, it will be kept by the structure for the following academic year.



#### *San Damiano*

##### *Yearly accommodation fees*

Fee range	Place in a double room	Place in a single room
A	1,995	3,095
B	2,230	3,330
C	2,735	3,835
D	4,005	5,105
D*	4,345	5,445
D**	4,600	5,700

In this structure there are mainly **double rooms**, all with a **private bathroom**.

In addition to the accommodation fee as to the chart above, the students must also pay:

- € 500 as refundable interest-free damage deposit, paid back to the student when leaving the college, (the amount is reduced to 300 € for readmitted students, because of the sum already paid in a.y. 2018/2019);
- € 100 as a contribution for the internal activities;
- € 130 as forfeit for the scheduled changing of bed linens.



#### *Ker Maria*

##### *Yearly accommodation fees*

Fee range	Place in a double room	Place in a single room
A	1,995	3,095
B	2,230	3,330
C	2,735	3,835
D	4,005	5,105
D*	4,345	5,445
D**	4,600	5,700

In this structure there are mainly **double rooms**, all with a **private bathroom**.

In addition to the accommodation fee as to the chart above, the students must also pay:

- € 500 as refundable interest-free damage deposit, paid back to the student when leaving the college, (the amount is reduced to 300 € for readmitted students, because of the sum already paid in a.y. 2018/2019);
- € 100 as a contribution for the internal activities;
- € 130 as forfeit for the scheduled changing of bed linens.

<sup>20</sup> In addition to the fee, the students may be charged for the local tax ("contributo di soggiorno"), if foreseen by the city regulation.



### Nuovo Joanneum

#### Yearly accommodation fees

Fee range	Place in a double room with external bathroom	Place in a single room with external bathroom	Place in a single room with private bathroom
A	1,895	2,995	3,295
B	2,130	3,230	3,530
C	2,635	3,735	4,035
D	3,840	4,940	5,240
D*	4,185	5,285	5,585
D**	4,430	5,530	5,830

In this structure there are either **single** or **double** rooms with an **external bathroom**.

In addition to the accommodation fee as to the chart above, the students must also pay:

- € 500 as refundable interest-free damage deposit, paid back to the student when leaving the college, (the amount is reduced to 300 € for readmitted students, because of the sum already paid in a.y. 2018/2019);
- € 100 as a contribution for the internal activities.



### San Luca e Armida Barelli

#### Yearly accommodation fees

Fee range	Place in a double room
A	1,995
B	2,340
C	2,835
D	4,060
D*	4,295
D**	4,600

In this structure all rooms are **double** and have a **private bathroom**.

In addition to the accommodation fee as to the chart above, the students must also pay:

- € 500 as refundable interest-free damage deposit, paid back to the student when leaving the college, (the amount is reduced to 300 € for readmitted students, because of the sum already paid in a.y. 2018/2019);
- € 100 as a contribution for the internal activities.



### Il Romitello

#### Yearly accommodation fees

Fee range	Place in a double room with external bathroom	Place in a single room with external bathroom
A	1,685	2,785
B	1,920	3,020
C	2,515	3,615
D	3,680	4,780
D*	3,910	5,010
D**	4,160	5,260

In this structure all rooms are **double** and have a **private bathroom**.

In addition to the accommodation fee as to the chart above, the students must also pay:

- € 500 as refundable interest-free damage deposit, paid back to the student when leaving the college, (the amount is reduced to 300 € for readmitted students, because of the sum already paid in a.y. 2018/2019);
- € 100 as a contribution for the internal activities.



### Sacra Famiglia

The accommodation in this structure necessarily implies benefiting also from the food service, as specified below.

#### Yearly accommodation fees

Fee range	Place in a double room with external bathroom	Place in a single room with external bathroom
A	1,995	2,545
B	2,230	2,780
C	2,735	3,285
D	3,845	4,395
D*	4,135	4,685
D**	4,380	4,930

In this structure there are mainly single rooms with an **external bathroom**.

In addition to the accommodation fee as to the chart above, the students must also pay:

- € 500 as refundable interest-free damage deposit, paid back to the student when leaving the college, (the amount is reduced to 300 € for readmitted students, because of the sum already paid in a.y. 2018/2019);
- € 100 as a contribution for the internal activities.

#### Yearly food service fees

Fee range	Food service
A	570
B	680
C	840
D	1,070
D*	1,070
D**	1,070

Breakfast and dinner from October 2019 to June 2020 are included in the fee.

In case it is not possible to provide the students with a meal in the Residential College, the food service will take place in other structures indicated by EDUCatt.



### Capitanio

#### Yearly accommodation fees

Fee range	Place in a double room	Place in a single room
A	1,685	2,785
B	1,920	3,020
C	2,515	3,615
D	3,680	4,780
D*	3,910	5,010
D**	4,160	5,260

In this structure there are mainly **single rooms** with a **private bathroom**.

In addition to the accommodation fee as to the chart above, the students must also pay:

- € 500 as refundable interest-free damage deposit, paid back to the student when leaving the college, (the amount is reduced to 300 € for readmitted students, because of the sum already paid in a.y. 2018/2019);
- € 100 as a contribution for the internal activities.



### Yearly accommodation fees

Fee range	Place in a double room with external bathroom	Place in a single room with external bathroom	Place in a single room with private bathroom
A	1,685	2,785	3,285
B	1,920	3,020	3,520
C	2,515	3,615	4,115
D	3,680	4,780	5,280
D*	3,910	5,010	5,510
D**	4,160	5,260	5,760

In this structure there are either single or double **rooms** with an **external bathroom**.

In addition to the accommodation fee as to the chart above, the students must also pay:

- € 500 as refundable interest-free damage deposit, paid back to the student when leaving the college, (the amount is reduced to 300 € for readmitted students, because of the sum already paid in a.y. 2018/2019);
- € 100 as a contribution for the internal activities.

---

Possible modifications or integrations will be notified on: [www.educatt.it](http://www.educatt.it)

---

June 2019

The Managing Director

The President

## TABLE OF CONTENTS

### GENERAL REGULATION FOR ALL THE CAMPUSES (MILAN, BRESCIA, PIACENZA, ROME)

1. PLACES AVAILABILITY .....	1
2. GENERAL CONDITIONS to apply for the call .....	2
3. MERIT-BASED REQUIREMENTS .....	4
4. EVALUATION OF THE STUDENT'S ECONOMIC AND PATRIMONIAL CONDITIONS (FOR THE ASSIGNMENT OF THE INCOME RANGES) .....	6
5. CALCULATION OF THE ANNUAL fee .....	9
6. REQUIREMENTS .....	10
7. DEADLINES AND PROCEDURES FOR THE APPLICATION SUBMISSION .....	14
8. SUBMISSION OF APPEALS .....	15
9. INCOME-BASED FEES .....	15
10. PAYMENT AND PARTICULAR CONDITIONS .....	16
11. OPENING PERIOD OF THE RESIDENTIAL COLLEGES .....	18
12. CHECKS ABOUT THE ECONOMIC CONDITIONS .....	19
13. INFORMATION NOTICE ON THE PROCESSING OF PERSONAL DATA (EU Regulation 2016/679) .....	19

### SPECIFIC DETAILS FOR EACH CAMPUS

1. MILAN Campus .....	21
2. BRESCIA CAMPUS .....	27
3. PIACENZA cAMPUS .....	29
4. ROME CAMPUS .....	32

